

iVMS-4500 Mobile Client Software
User Manual(Windows Mobile)
(V1.5)

Thank you for purchasing Hikvision product. This manual applies to iVMS-4500 mobile client software (Windows Mobile), please read it carefully for the better use of this software.

The contents in this manual are subject to change without notice. Hikvision assumes no responsibility for inaccuracies or omissions and specifically disclaims any losses, or risks incurred as a consequence, directly or indirectly, of the use of any of the contents in this manual.

Table of Contents

Chapter 1 Introduction.....	3
1.1 Overview	3
1.2 System Requirements.....	3
1.3 Performance Description	3
Chapter 2 Install &Uninstall	4
2.1 Install the Software	4
2.2 Uninstall the Software.....	5
Chapter 3 Run Software	6
3.1 Login Software.....	6
3.2 Main Menu.....	7
Chapter 4 Device Management	8
4.1 Add Device	8
4.2 Modify/Delete Device	9
Chapter 5 Camera Configuration	10
Chapter 6 Live View	12
6.1 Live View	12
6.2 PTZ Control.....	14
Chapter 7 Favorites	16
Chapter 8 Picture & Video Management.....	18
Chapter 9 Local Configuration.....	19
Chapter 10 Others.....	21
Chapter 11 Troubleshooting.....	22

Chapter 1 Introduction

1.1 Overview

iVMS-4500 (V1.5) mobile client software, which is based on windows mobile OS, can be used to remotely view the live video from DVR, IP camera, IP speed dome and DVS via wireless network, and realize PTZ control.

With this software installed in your mobile device, you are able to log on to the front-end device via WIFI, 2G or 3G, besides. If there is no public IP available, it's accessible by using a dynamic name, or by forwarding ports to the public IP of router. And if the wireless router is connected to the device, it is allowed to access the client software via WIFI as well.

Note: in order to simplify the description, we define “iVMS-4500 (V1.5) mobile client software” as “mobile client” and “DVR, DVS, IP camera, IP speed dome” as “device” in the following chapters.

1.2 System Requirements

Hardware: Pocket PC with touch-screen, with the available memory not less than 20MB and the frequency of CPU higher than 200MHz.

Software: Windows Mobile 5.0 or later version

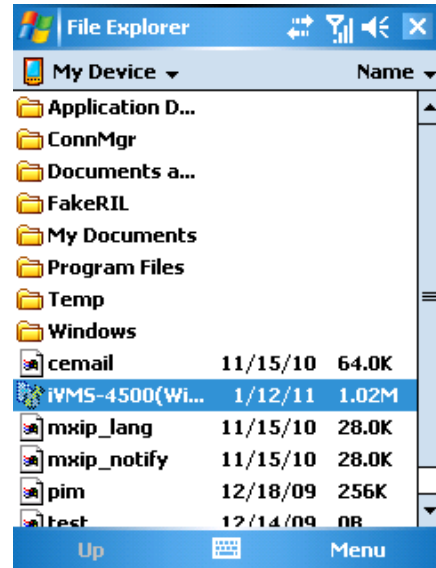
1.3 Performance Description

Mobile Client	Stream Type	Sub stream
	Frame Type	BBP or single P frame
	Frame Rate	2~8fps(depending on the performance of mobile device)
	Resolution	QCIF, CIF
	Stream Type	Video
	Bit Rate	32~256Kbps (depending on the network performance)

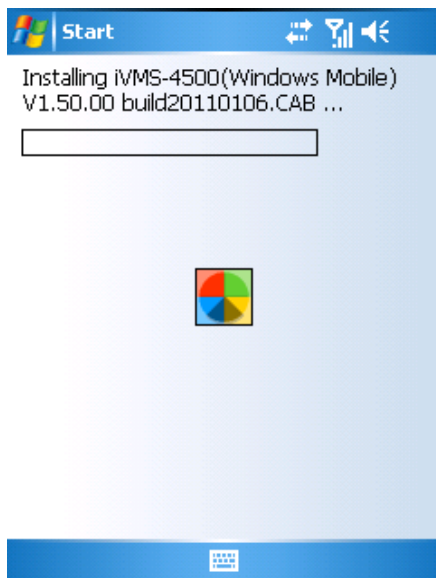
Chapter 2 Install &Uninstall

2.1 Install the Software

Copy the installation file “iVMS-4500(Windows Mobile)V1.50.00.CAB” to your mobile device, and click the cab file to enter installation progress.



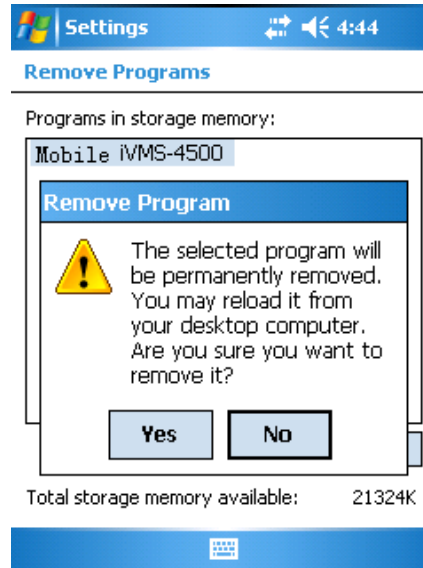
During the installation, the installing progress indicator can be viewed. Please wait until the installation is finished.



2.2 Uninstall the Software


In the Start menu of your mobile device, navigate to Settings-> System-> Remove Programs, you will enter the interface to remove programs.

Select Mobile iVMS-4500 program and click the “Remove” option. A prompt will appear on the screen. Click “Yes” to confirm to remove the programs.



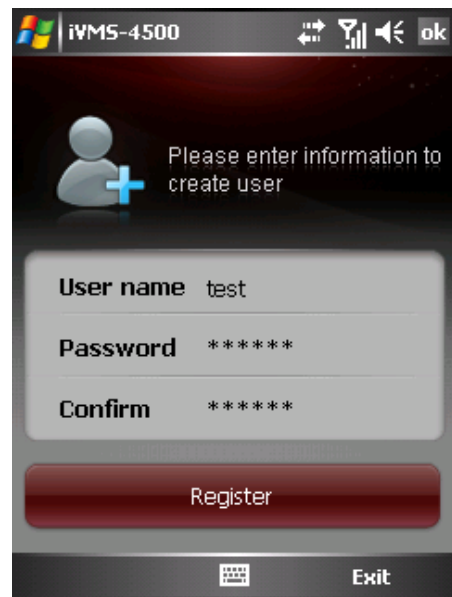
Chapter 3 Run Software

After having installed the software on mobile phone, navigate to Start-> Programs,

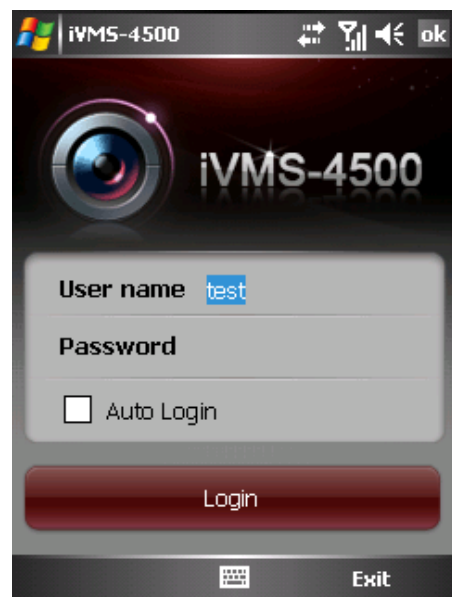
and click  icon to start the program.

3.1 Login Software

User needs to register a user name and password if this application is used for the first time, enter the user name and password in the register interface, and then click “Register” to complete user registration.



Enter the user name and password in the Login interface. If the “Auto Login” option is selected, it allows user to directly access the main menu when running the client software next time.



3.2 Main Menu

Click “Login” to enter the main menu interface.



Main menu description

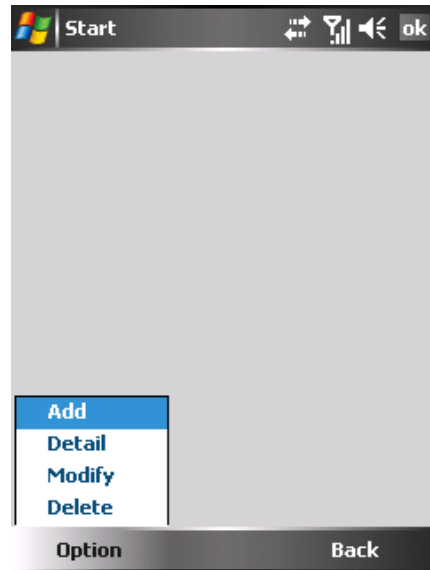
Main Menu	Descriptions
Live	Live view and PTZ control
Devices	Add new device, delete device, device's information
Favorites	Define specific channels to your favorites
Channel Config	Configure camera's stream type, resolution, frame rate and bit rate
Local Config	Configure the store path, access point and speed of PTZ control
Picture & Video	Manage the pictures and videos
Account Setting	Password modification
About	Software's version information

Chapter 4 Device Management

The device list is empty in default. Firstly you need to add a device so as to access to all operations such as preview, configuration and device management.

4.1 Add Device

Select “Devices” icon in the main menu to enter device management interface, and then click Option->Add to enter the device configuration interface.



In the device configuration interface, user can select either “IP” or “Domain” register mode for login to the device. The Domain mode is used when there is no fixed IP address available.

 A screenshot of the Windows Mobile interface showing the device configuration form. The form contains the following fields:

- Device name: 1
- Register mode: IP (dropdown menu)
- Address: 172.2.97.12
- Port: 8000
- User name: admin
- Password: *****
- Chan No.: 16

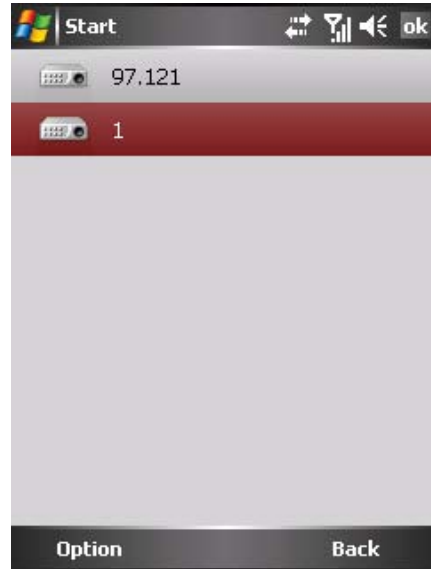
 At the bottom of the form, there are two buttons: 'Save' and 'Back'.

Parameters description

Parameters	Descriptions
Device name	Define a name for the device
Register mode	IP or Domain
Address	IP address/dynamic name address

Port	Traffic port of device
User name	Device's user name
Password	Device's password
Chan No.	The number of cameras

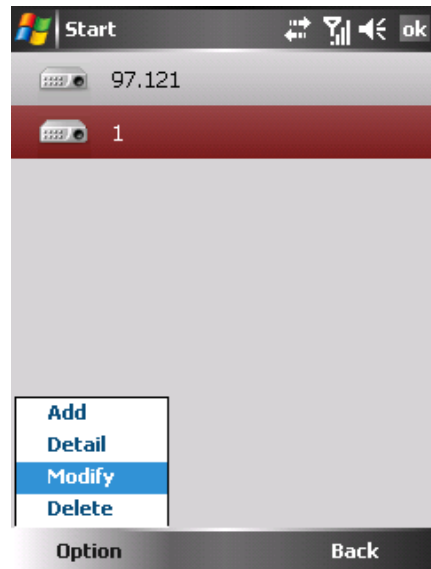
The newly added device is in selected status and marked with red color after you return to the device management interface.



4.2 Modify/Delete Device


Select a device in the list, and then click Option ->Modify to modify the selected device information.

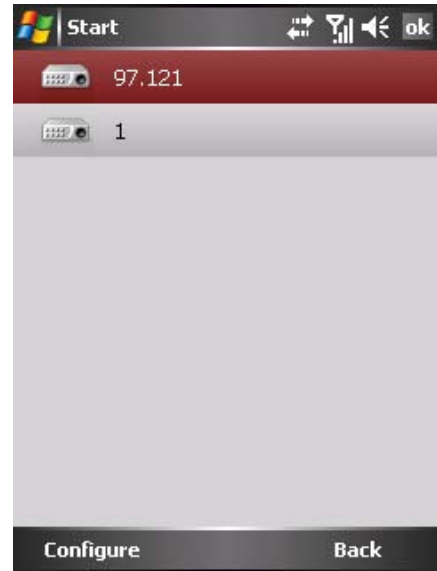
Select a device in the list, and then click Option ->Delete to remove the selected device from the list as well.



Chapter 5 Camera Configuration

After having added the device successfully, you can configure the preview parameters for each camera according to your network environment.

Click  icon in the main menu to enter camera configuration interface on which all of the added devices are listed.

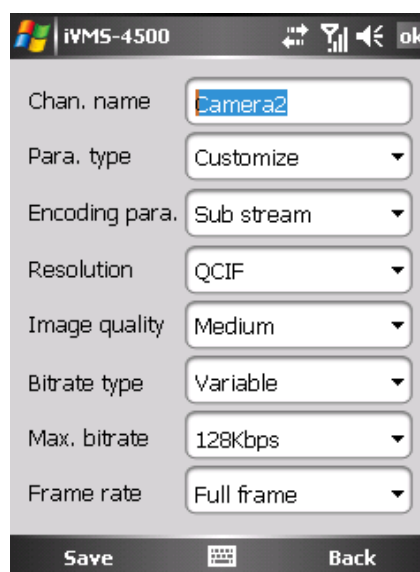


Click the device list to select the camera which needs to be configured.



Click “Configure” to enter parameters configuration interface on which you can configure stream type, resolution, image quality, bit rate and frame rate.

After having finished the parameters adjustment, click “Save” to save the settings.



The parameters type can be “Customize” or “General”. If the “Customize” option is selected, then all of parameters are configurable, or the channel parameters are fixed and not allowed to be adjusted.

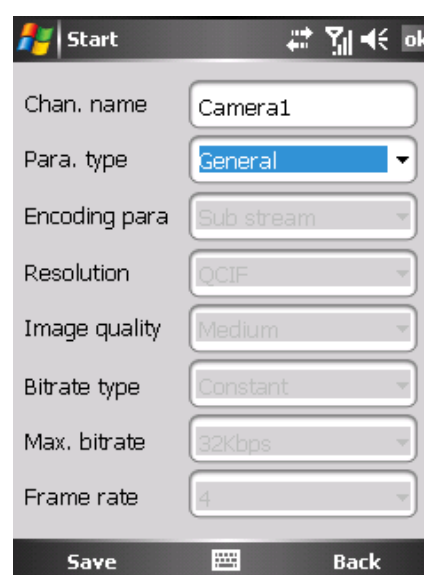
Camera parameters description

Parameters	Description
Chan. name	Define a name for the camera
Para. type	You can select customize or general
Encoding para.	You can select main stream or sub stream for live preview
Resolution	CIF or QCIF
Image quality	6 levels of image quality are selectable
Bitrate type	Variable or constant bit rate
Max. bitrate	The maximum bit rate of each camera, you need to configure it according to the net environment
Frame rate	Frame rate of the camera

When the “Para.type” is selected to “General”, the parameters will be fixed and not configurable.

General parameters


Parameters	Descriptions
Encoding para.	Sub stream
Stream type	Video
Resolution	QCIF
Image quality	Medium
Bitrate type	Constant
Max. bitrate	32Kbps
Frame rate	4fps

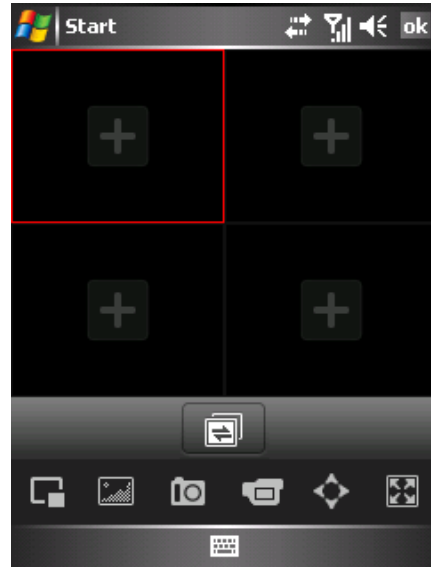


Chapter 6 Live View









After the proper parameters are configured, you can preview the cameras, control the PTZ as well.

6.1 Live View



Enter the live view interface by clicking  in the main menu, and the screen will be displayed in 4-division mode by default.



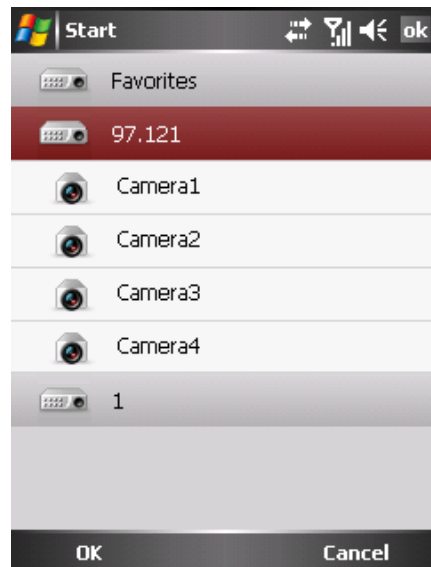
Button definitions

Buttons	Descriptions	Buttons	Descriptions
	Cameras selection		Switch camera for previewing
	Stop playing		Adjust image quality
	Picture capture		Record
	Call out PTZ control panel		Full screen




Preview

Select the window on which you want to play live video, and click  or  to enter camera selection interface.


Select the device to unfold the cameras list, select the camera and then click "OK" to start viewing live video from the selected camera.





When having successfully obtained the video stream, the software will return to preview interface, user can preview other cameras by referring to above operations. In 4-division preview mode, you can click any of the windows to enlarge it; click it again on the screen to restore the 4-division mode.

Click  button on the toolbar to adjust the image quality, and the button changes to . Click the  buttons (low->high) to select different levels of image quality.






Click  button on the toolbar to enter the full screen preview mode. When in the full screen mode, the toolbar will be hidden, and you can click any area of the screen to show the toolbar.


User can click  button to stop previewing the selected camera, or click the  button to stop playing video of all cameras. User can exit the interface by clicking "OK" icon on the right upper side of the screen.



Recording and Picture Capture

User can click  button to capture the picture when previewing the video, or click  button to start recording. The record button changes to . User may click it again to stop recording. The recorded video files and pictures are saved in the "My Documents" folder by default.



The store path can be modified in the local configuration menu by clicking  icon in the main menu.







6.2 PTZ Control


Click  button to enter PTZ control interface.

Through the PTZ control panel, user can operate zoom in/out, iris open/close, preset setting/callup, and pan/tilt movement control for the camera.




Description of PTZ control buttons:

Buttons	Descriptions	Buttons	Descriptions
	Zoom in		Zoom out
	Iris config		Preset setting/callup


Click  button to enter the iris configuration interface.
Move the sliding bar to adjust the iris according to different requirements.



Preset setting/callup

In PTZ control mode, move the camera to desired scene, and then click  to enter preset configuration interface. Enter the preset number and then click "Set" on the panel to finish the preset settings.


User can also enter the preset number in the text box and then click "Call" to realize callup of the programmed preset.

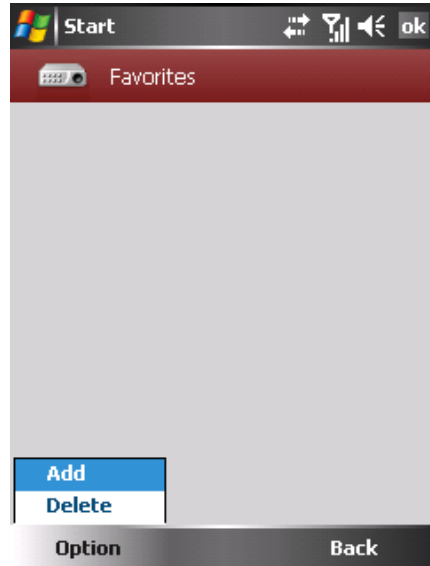
Click the  button to exit the preset configuration interface.



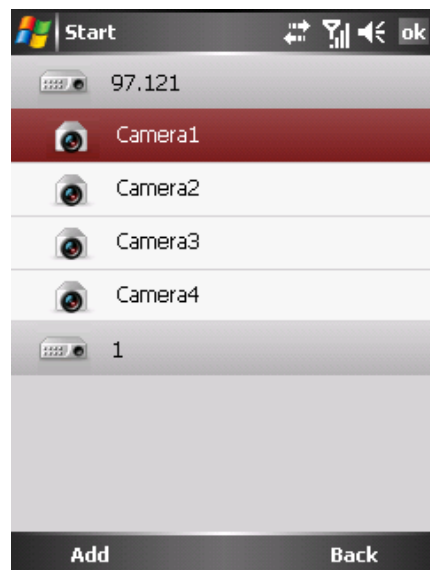
Chapter 7 Favorites

The Favorites function can be used for realizing self-defined management of cameras and enabling the preview much easier and convenient.

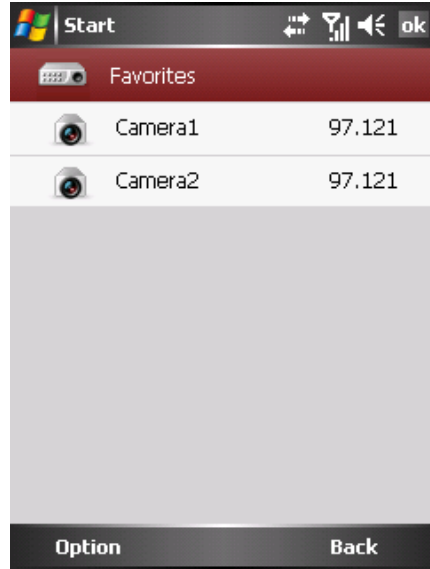
In the main menu interface, click  to enter the Favorites interface, and add cameras under Favorites by clicking “Option”->”Add”.



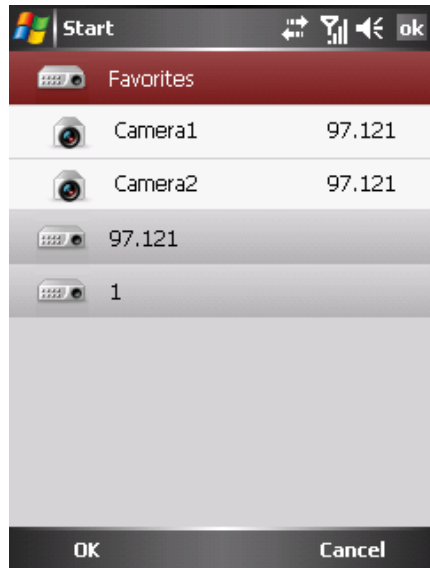
In the cameras selection interface, select the camera from the list and then click “Add” option to add the camera to the Favorites.



After having finished the cameras selection, click “Back” to return to Group Management interface. The added cameras will be displayed in the list under the Favorites node.




Now, by navigating to the live preview interface, user can select the cameras directly from “Favorites’ for preview.



Chapter 8 Picture & Video Management

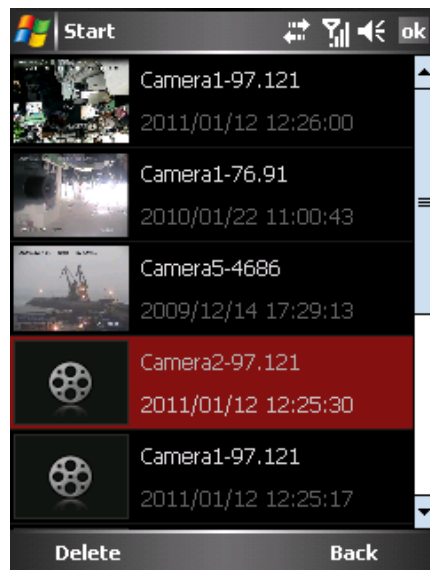
In order to make it easier to operate playback and video/picture management, user can manage the video and pictures that saved from live preview.

Click  In the main menu to enter video/picture management interface. The record files and captures pictures displayed in the list.




Select the video or picture item from the list, and double click it to enlarge the picture or play the record file.

User may click "Delete" to remove the selected record file or picture from the list,



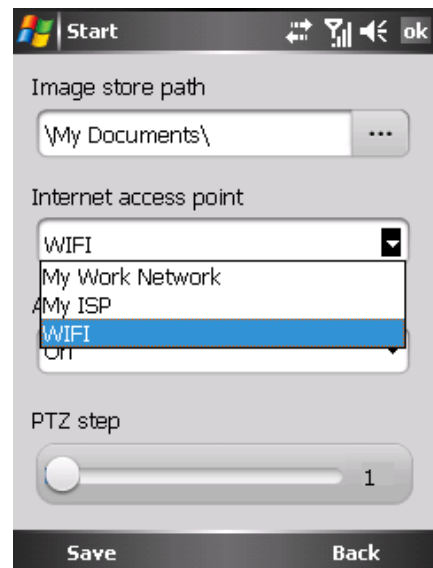
Chapter 9 Local Configuration

Through the Local Configuration, user can configure the Internet access point, saving path of captured images and record files, auto login on/off, and the step of speed when controlling the PTZ camera.

You can enter local configuration interface by clicking  icon in the main menu.



Select an access point according to your network environment. The options include: “My Work Network”, “My ISP” and “WIFI”.




Click drop-down menu of Auto Login to select the login mode. If the Auto Login is selected to On, then it allows user to directly access the main menu when running the client software.




In the PTZ step option, you can drag the sliding bar to adjust the speed in pan and tilt direction. Seven steps are selectable, and the higher level indicates higher speed of pan/tilt movement.

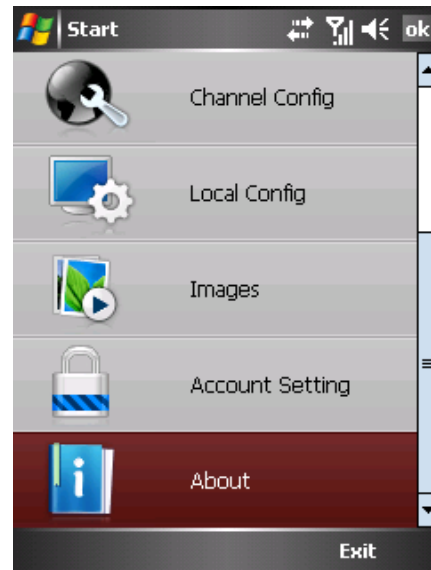


Chapter 10 Others

Click  in the main menu to enter password modification interface. It is allowed to modify current password. Enter old password, new password and then confirm new password to complete the modification.



User can click  About in the main menu to view the version information of the software.



Chapter 11 Troubleshooting

1. What devices are supported by iVMS-4500 mobile client software?

A: The devices which adopt H.264 and Mpeg4 are compatible with this software. It is recommended to apply this client software to a device which supports dual stream.

2. The mobile client software prompt “login failed” when access to the device via WIFI.

A: Please check whether the WIFI parameters are configured properly in your mobile device.

3. After start previewing the video, the responding of the mobile device becomes very slow, and the video is easy to get stuck

A: This problem may due that the lower performance of mobile device, please try to preview less cameras at the same time, or decrease the frame rate and resolution, you may refer to the following parameters:

Resolutions	Recommended number of cameras	Recommended frame rate
CIF	1	8fps or lower
QCIF	4	8fps or lower